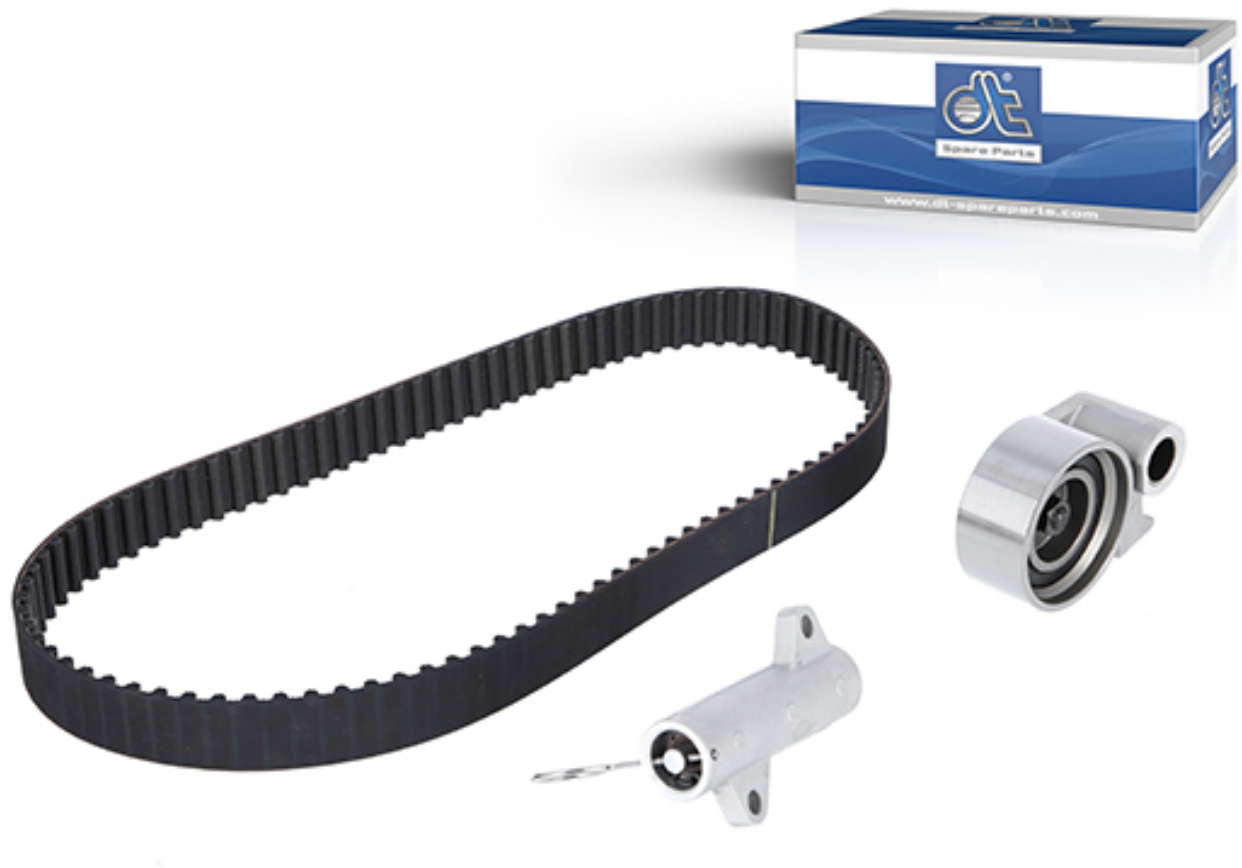


Timing belt kit

suitable for: Toyota

????????

4057795426580



The timing belt kit 14.91000 contains synchronised components, among these and alongside the timing belt are also a tension pulley and the vibration damper.

The timing belt, driven by the crankshaft, transfers rotary motion to the camshaft. The cams operate transmission elements that subsequently transfer the movement to the valves. As a result of their tooth system (positive-locking drive element), the crankshaft and the camshaft cannot turn into one another, therefore this guarantees that the valve will open and close at the correct point in time, which is incessant for supplying the combustion chamber with the air-fuel mix.

Tension pulleys ensure the precise guidance and constant tension of the belt in belt drive. They can either be fix-mounted or combined with the tensioners as elastic belt tensioners. Tension pulleys increase the wrap angle for belt drives and, as a result, transfer higher power ratings. They enable a change in the rotary direction of the connected units. In conjunction with the belt tensioners, the tension pulleys also balance out operational-related lengthenings

of the belt.

The DT Spare Parts brand tension pulleys essentially consists of ball bearings and a pulley. The ball bearings are filled with grease that is resistant to high heat and are optimally covered on both sides. Independent of the technical requirements, different materials are used in the manufacture of the pulleys (e.g. frozen sheet steel, twisted bar material, cast iron or polyamide 66 with a fibreglass share).

The precisely worked tread of the pulley ensures optimal installation of the drive belts, low wear and minimal running noise.

Vibration dampers have the task of dampening the irregularities and vibrations that are caused by the quick change of positive and negative speeds of the crankshaft. They ensure that the components involved never become damaged. Furthermore, they take the belt to the required tension so that the torque of the crankshaft can be transferred to the camshaft both in a force-fitting and positive manner.

Hints & tips:

Important adjustment points should be marked before replacing so that after the replacement of the belt on the tension pulley the belt can be set.

Furthermore, it is important to ensure the correct installation direction so that the belt is always tightly applied to the opposite side of the tension pulley for tensioning.

Further links

[Similar articles from the product range](#)

Note: Accessories are listed on the respective article detail page in the Partner Portal.

[Request article or order in Partner Portal](#)

DT Spare Parts

The brand DT Spare Parts from Germany provides a complete range of vehicle parts and accessories with a 24 month guarantee – no matter whether for trucks, trailers, buses, transporters or further applications, e.g. cars, agricultural vehicles, construction vehicles, marine or industrial applications. The guaranteed brand quality is achieved through the consistent product optimisation and relentless quality assurance within the framework of the Diesel Technic Quality System (DTQS).

More info: www.dtqs.de